



Welcome to the Virtual IMS user group newsletter. The Virtual IMS user group at www.fundi.com/virtualims is an independently-operated vendor-neutral site run by and for the IMS user community.

Virtual IMS user group presentation

The latest webinar from the Virtual IMS user group was entitled, "IMS test data management", and was presented by John B Boyle, Senior Product Specialist with Informatica Development Limited.

John has worked in the industry since 1976, when he graduated from Glasgow University with a degree in Computer Science. During this time he has worked in the manufacturing, banking, and insurance sectors, as an IMS and DB2 DBA, and on Performance and Storage Management. He spent fifteen years at BMC Software, providing specialist advice on their extensive range of Database Tools. For the last nine years he has worked for

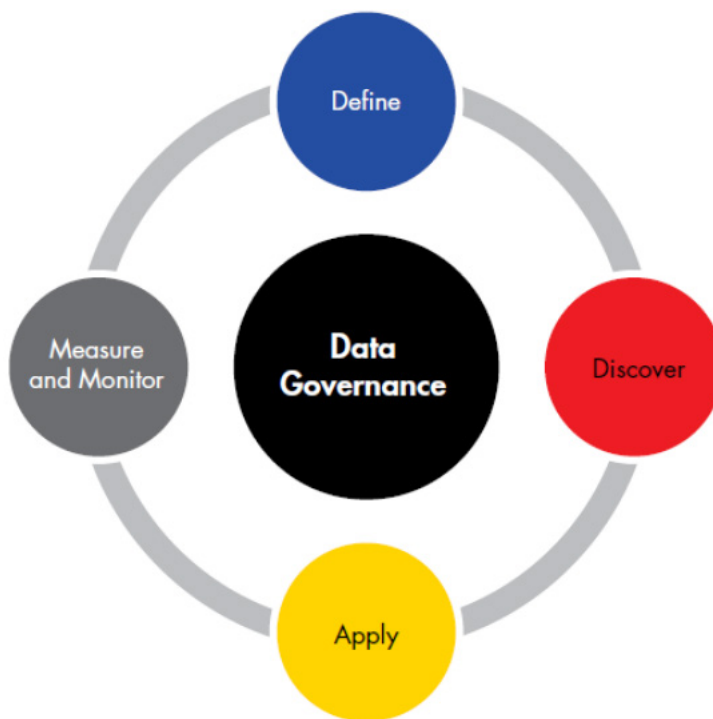
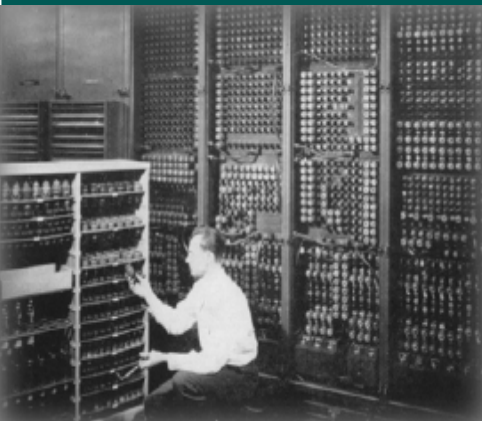


Figure 1: Data Masking Solution – Basic Requirements

Informatica Software as a Technical Architect focusing on all mainframe related components of their Data Integration Solution Set. This includes Mainframe Data Connectivity for bulk access

Contents:

Virtual IMS user group presentation	1
Meeting dates	3
IMS news	3
About the Virtual IMS user group	3



and changed data capture, Data Archiving, and Test Data Management. He has been a regular attendee at the UK GSE IMS and DB2 working groups for many years, and more recently – the z/Linux Working Group, and has presented at UK GSE, and UK CMG conferences on a variety of Database and Performance related topics.

John Boyle started by giving the user group some details about his own background and about Informatica. He wants to say that testing shouldn't be done on production data, but on a subset of production data that had been de-personalized.

The reason you need a subset of the data is because although DASD is cheap, it isn't free. Plus test runs take too long on live-sized datasets and use too much system resource. In addition, you find that everyone wants their own test environment.

You can't use data containing sensitive information, ie personally identifiable information, personal health information, or credit card information. Most countries now have data privacy legislation, along with penalties!

There are a number of issues to be overcome with creating a subset:

- High Volumes of data to process when building a subset of production data
- Subset needs to be kept current – so this is not a one time process
- Subset must be 'consistent' with respect to:
 - Database defined RI
 - Application defined RI (invisible from database metadata)
 - Cross database RI (even less visible)
 - Cross platform RI applications span platforms.

And packaged applications could be faced with understanding a data model containing 80,000 tables!

The options for creating a subset are to have in-house developed programs and scripts. This could be included it as part of the initial application design or developed some time later. It will need to be maintained by someone. You need to think about packaged applications like SAP, Oracle E-Biz. And there needs to be enterprise wide consistency.

An alternative is a vendor-supplied test data management tool that support for all platforms, databases, and files used by

the enterprise. If you do that, you need to look at license and maintenance costs. And also see just how easy it is to use.

John went on to tell the user group about issues with data masking. Such as:

- Identifying what needs to be masked – masking all data is counter productive
- Data masking must be consistent – same issues as for consistent subsetting in that data is interrelated by database and application RI
- Masked data must be representative – testing with random data will not exercise application logic
- Masked data must be secure – prevent 'reversal' of masking to give original data
- Masking must be repeatable – need to refresh test data with new data periodically.

The basic requirements for data masking are shown in Figure 1.

Test data management for the enterprise needs to:

- Establish what data items need to be masked
- Establish how these data items should be masked

- Use these results to establish and document enterprise data masking policy
- Build data masking rules for the identified data items
- Establish where these data item are stored
- Build data masking processes to mask these data items
- Establish inter-object relationships and dependencies
- Build subsetting process to limit volume of data written to 'test set' when we mask the data
- Execute!

John then discussed how Informatica's product could be used and described a couple of case studies. He also walked us through a demo of the product.

A copy of this presentation is available for download from the Virtual IMS user group Web site at www.fundi.com/virtualims/presentations/testdataFeb14.pdf.

You can see and hear the user group meeting by downloading the WMV file from www.fundi.com/virtualims/presentations/2014-02-04meeting.wmv.

Meeting dates

- 8 April 2014, Fundi Software's Jim Martin will be speaking.
- 10 June 2014, Syspertec's Patrick Fournier will describe a simpler solution for issuing outgoing Web service calls from IMS.

IMS news

Compuware has announced enhancements to Compuware Strobe, a component of Compuware APM for Mainframe. Strobe Advisor now includes information on IMS, CICS, and Language Environment (LE) performance issues. More information can be found at <http://investor.compuware.com/releasedetail.cfm?ReleaseID=817622>.

Imperva has acquired real-time mainframe security auditing agents from Tomium Software. The Tomium Software solution enhances the security of z/OS mainframe environments by enabling continuous auditing of DB2 and IMS database activity with event monitoring. Tomium Software monitoring agents stream real-time audit data to the Imperva SecureSphere platform, a centralized security management and reporting framework. More information can be found at <http://www.imperva.com/news/press.html>.

About the Virtual IMS user group

The Virtual IMS user group was established as a way for individuals using IBM's IMS hierarchical database and transaction processing systems to exchange information, learn new techniques, and advance their skills with the product.

The Web site at www.fundi.com/virtualims provides a central point for coordinating periodic meetings (which contain technically-oriented topics presented in a webinar format), and provides articles, discussions, links, and other resources of interest to IBM IMS practitioners. Anyone with an interest in IMS is welcome to join the Virtual IMS user group and share in the knowledge exchange.

To share ideas, and for further information, contact trevor@itech-ed.com.

The Virtual IMS user group is free to its members.